



# The Info Sheet

## FLUSHING CAMERA CLUB

... in our 42nd year and counting.

Member: Photographic Federation of Long Island (PFLI)

"Together in friendship may we learn the art of photography"

Volume 15 Number 2

October 2012

### FCC Executive Committee

#### Officers:

##### President:

Mary O'Connor, 718. 939.4963

##### Vice President:

Ramiro Agredo, 718.664.7366

##### Treasurer:

Joe Caruso, 718.357.4251

##### Secretary:

---

#### Committee Chairpersons:

##### Administration:

Frank Reynolds, 718.263.9131

##### Competition:

Stan Strauss, 718.423.2825

##### Programs/Education:

Helen Repstad, 718.845-4477

##### Field Trips:

Joe Crupi, 718.343.0280;

Michael Sender, 718.459.0203

##### Membership:

Tom Mrwik, 718-343-8387

##### Publicity:

Adam Holstein, 718.463.5538

##### PFLI Delegate:

Helen Repstad, 718.845.4477

##### The Info Sheet:

Joe Crupi 718-343-0280

Ron Caldwell 917-806-6170

##### Website:

Ramiro Agredo, 718.664.7366

##### Additional Members:

Marty Fleischer: 718.591.8246

Dennis Golin: 718.479.0643

Ron Caldwell

Dorothy Gist

##### Web Site:

[www.flushingcameraclub.org](http://www.flushingcameraclub.org)

### FROM THE EDITOR'S DESK:

Fall is here. For me this is the best time of year for photography. The temperatures are cool and the outdoors are inviting. When the leaves turn colors its definitely time to grab your camera and burn some pixels. Whether you travel to one of those distant iconic locations (see page 3, VT field trip) or go for a stroll in your neighborhood, many opportunities for great photo images will be available to you. Keep your batteries charged and your eyes open and enjoy all this season has to offer.

Joe Crupi



### Upcoming meetings:



3 -Competition #2 -Judge: Mike DiRenzo (Huntington CC)

<http://www.mikedirenzophotography.com/>

16 Tues 7:15—Use of the Glass filter in Elements Bob Green

-7:30 Program –Elements Layers Helen Repstad

31 - Program: Fun with Photoshop #3 Joanna Gazzola



**Meetings:** 7:30 pm, 1st, 3rd, 5th Wednesdays at Flushing Hospital, Auditorium, 45 Ave & Parsons Blvd., Flushing. Park on street or in lot across the street from Hospital. Parking ticket MUST be validated by the Camera Club.

**Dues:** \$40.00 for individual  
\$60.00 for family;\$20.00 for students: up to 23 yrs.



7 -Competition #3—Judge: Rob Glick (former FCC member)

**Happy Birthday To You!**



**OCTOBER Birthdays:**

- 11th Joe Caruso
- 12th Joe Crupi
- 25th Judy Diaz
- 28th Marty Neff
- 31st Henry Szczepanski



Photos by Joe Caruso

**Field Trip -Queens Zoo Joe Caruso**

On August 17<sup>th</sup>, Tom Mrwik, Joe Crupi, Mike Sender, Henry Szczepanski and I spent an enjoyable morning at the Flushing Meadows Corona Park Zoo.

Although it was a warm day, we managed to find many shady areas as we walked from one exhibit to the other. There is a good amount of animals from North America and an interesting bird aviary. There were various species of birds that came close to us, so we were able to photograph them.

Like so many Queens residents, many of us have never visited this zoo. It may be small in comparison to the Bronx Zoo but it is a hidden treasure in Queens. It was also a good opportunity to share some conversation and to improve our outdoor picture taking abilities.



Photos by Michael Sender



After the shoot some of us went to lunch at Leo Latticini's Deli AKA "Momma's" on 46th Ave and 102 St. Their friendly staff (photo at right) made us feel very welcome as we indulged in great sandwiches followed by Italian pastries. The perfect end to another FCC outing.



### Photography Links &

### Resources

Flushing

Camera Club:

[www.flushingcameraclub.org](http://www.flushingcameraclub.org)

PFLI: [www.pflionline.com](http://www.pflionline.com)

PSA: [www.psa-photo.org](http://www.psa-photo.org)

Stan Strauss: <http://www.stannich.com>

Ron Caldwell:

<http://www.fotosbyron.com>

[www.photoplugins.com](http://www.photoplugins.com)

Hunt's Photo: Gary Farber,

[www.DigitalGuyGary@wbhunt.com](mailto:www.DigitalGuyGary@wbhunt.com)

Russ Burden:

[www.russburdenphotography.com](http://www.russburdenphotography.com)

[www.takegreatpictures.com](http://www.takegreatpictures.com)



I've taken up photography because it's the only hobby where I can shoot people and cut their heads off without going to jail.

aunty acid  
[www.facebook.com/auntyacid](http://www.facebook.com/auntyacid)

© Gerd Beckland 2012



### FCC VERMONT Field Trip :

It has been a few years so by popular demand we will return to Vermont for fall foliage this **October 11, 12 and 13.**

Check your emails for Motel info and further details.

Contact Joe Crupi to sign up.

[Joecxlt@aol.com](mailto:Joecxlt@aol.com) 718-343-0280



*Reminder: the FCC Restricted Competition for May 2013 is "Aged."*..old, aging, rusty, showing corrosion, wilting, structures in disrepair, flowers past their peak, or portrait of the elderly.

Check out [page 8](#) ...You can download the [score sheet](#) to keep your own records of the scores you achieved this season.

At the end of the year you will know exactly which images are eligible for [Best of the Best](#).

**NOTICE:** With the construction going on at the Hospital we are sometimes given short notice changes to our meeting dates or room change. FCC has no control over the situation and we try to get the word out as soon as we are made aware of a change. Sorry for any inconvenience. Please bear with us.

Register on line -it's free.....

**pdn | PhotoPlus Expo 2012**

**OCTOBER 24-27 25-27 nyc** JAVITS CONVENTION CENTER  
[www.photoplusexpo.com](http://www.photoplusexpo.com)

# AWARDS



**Ramiro Agredo**

At left with two PFLI medals for perfect scores of 27

At right with his Leonard Victor award.

Ramiro is a photographer other members wish to emulate.

Great Job



More Leonard Victor awards:

← At left our President Mary presents Tom Mrwik with his and

At right Bob Green gets his award →



## Member's Updates:

Welcome back **Diana Rauch!** We were happy to see your smiling face at the Sept. 27th meeting. Glad you are making a good recovery from your knee replacement surgery.

**Bell Smith** also is recovering from knee replacement surgery - the second one for her. She is at the Extended Care Facility at North Shore Hospital in Manhasset for therapy. You can reach her at 516-684-6261 in the late afternoon or early evening.

**Mary Thompson** has returned home from the hospital following a second stroke and a bad fall. She will continue to need extensive therapy. You can reach her at 718-353-0878.

Well wishes to **Richard DeStefano** who has some serious medical issues and to his wife **Louise DeStefano** who has taken a leave from the club to care for him. Our prayers are for both of them.

# IMAGES OF THE MONTH FOR SEPTEMBER



Digital A Lucy Pearce *Hearts Reflection*



Digital S Ramiro Agredo *Bee Drop In*

Digital B Tony Coppeta *Admired Animator*



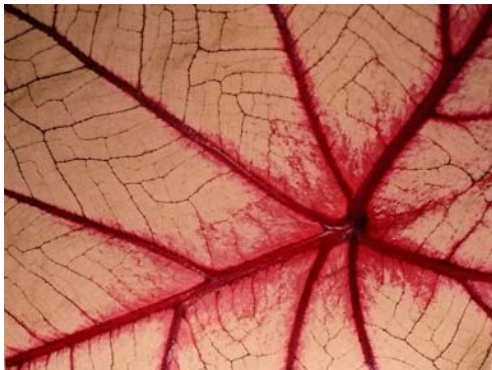
B&W A Suzanne Abruzzo *Puma*



Color S Ramiro Agredo *Bronx Gelada*

B&W S Ramiro Agredo *Espiritu Andino*

Color A Marty Neff *Bleeding Heart Caladium*



## COMPETITION STANDINGS AS OF September 28th:

### DIGITAL B

1 Tony Coppeta	4	*
2 Dianne Rauch	2	
3 Joe Caruso	1	
4 Berniee Gellman	0	

### DIGITAL A

1 Helen Repstad	6	
2 Lucy Pearce	5	*
3 Roy Woelfel	3	
TIE 4 John Baratta	2	
TIE 4 Henry Szczepanski	2	
6 Stan Strauss	0	

### DIGITAL S

1 Ramiro Agredo	6	*
TIE 2 Joe Crupi	5	
TIE 2 Barbara Shea	5	
4 Bob Green	3	
TIE 5 Joan Egan	2	
TIE 5 Tom Mrwik	2	
TIE 5 Michael Sender	2	
8 Ann Grodman	1	
9 Martin Fleischer	0	

### COLOR B

1 Adam Holstein	5
-----------------	---

### COLOR A

1 Marty Neff	2	*
2 Gene Kolomatsky	1	

### COLOR S

1 Ramiro Agredo	6	*
2 Bob Green	5	
3 Ann Grodman	4	

### B & W - B

### B & W - A

1 Suzanne Abruzzo	6	*
2 Gene Kolomatsky	0	

### B & W - S

1 Ramiro Agredo	6	*
2 Bob Green	4	
3 Ann Grodman	1	

Folks there is plenty of time to enter competition and to enter make ups for competitions you missed. As you can see we have lots of room for entries in **Beginner Color Prints** and **Beginner Black and White Prints** as well as the other categories.. If you need assistance getting started feel free to contact any of our veteran members for help. Once you enter an image you could get hooked. There are ribbons waiting to be won. Give it a try.

Don't forget part 2 of Russ Burden's Landscape tips on page 8.



**COMP #1** DATE: \_\_\_\_\_ JUDGE: \_\_\_\_\_

TITLE: \_\_\_\_\_ SCORE: \_\_\_\_\_ PFLI \_\_\_\_\_

TITLE: \_\_\_\_\_ SCORE: \_\_\_\_\_ PFLI \_\_\_\_\_

**COMP #2** DATE: \_\_\_\_\_ JUDGE: \_\_\_\_\_

TITLE: \_\_\_\_\_ SCORE: \_\_\_\_\_ PFLI \_\_\_\_\_

TITLE: \_\_\_\_\_ SCORE: \_\_\_\_\_ PFLI \_\_\_\_\_

**COMP #3** DATE: \_\_\_\_\_ JUDGE: \_\_\_\_\_

TITLE: \_\_\_\_\_ SCORE: \_\_\_\_\_ PFLI \_\_\_\_\_

TITLE: \_\_\_\_\_ SCORE: \_\_\_\_\_ PFLI \_\_\_\_\_

**COMP #4** DATE: \_\_\_\_\_ JUDGE: \_\_\_\_\_

TITLE: \_\_\_\_\_ SCORE: \_\_\_\_\_ PFLI \_\_\_\_\_

TITLE: \_\_\_\_\_ SCORE: \_\_\_\_\_ PFLI \_\_\_\_\_

**COMP #5** DATE: \_\_\_\_\_ JUDGE: \_\_\_\_\_

TITLE: \_\_\_\_\_ SCORE: \_\_\_\_\_ PFLI \_\_\_\_\_

TITLE: \_\_\_\_\_ SCORE: \_\_\_\_\_ PFLI \_\_\_\_\_

**COMP #6** DATE: \_\_\_\_\_ JUDGE: \_\_\_\_\_

TITLE: \_\_\_\_\_ SCORE: \_\_\_\_\_ PFLI \_\_\_\_\_

TITLE: \_\_\_\_\_ SCORE: \_\_\_\_\_ PFLI \_\_\_\_\_

**COMP #7** DATE: \_\_\_\_\_ JUDGE: \_\_\_\_\_

TITLE: \_\_\_\_\_ SCORE: \_\_\_\_\_ PFLI \_\_\_\_\_

TITLE: \_\_\_\_\_ SCORE: \_\_\_\_\_ PFLI \_\_\_\_\_

**COMP #8** DATE: \_\_\_\_\_ JUDGE: \_\_\_\_\_

TITLE: \_\_\_\_\_ SCORE: \_\_\_\_\_ PFLI \_\_\_\_\_

TITLE: \_\_\_\_\_ SCORE: \_\_\_\_\_ PFLI \_\_\_\_\_

**COMP #9** DATE: \_\_\_\_\_ JUDGE: \_\_\_\_\_

TITLE: \_\_\_\_\_ SCORE: \_\_\_\_\_ PFLI \_\_\_\_\_

TITLE: \_\_\_\_\_ SCORE: \_\_\_\_\_ PFLI \_\_\_\_\_

## Landscape Tips - Part 2 *Russell Burden* (part 1 in the Sept. Newsletter)

**Lenses:** Landscape photography is synonymous with wide angle lenses. That being said, there are many locations where the “picture in the picture” calls for the use of a telephoto. I suggest you always carry a longer lens with you as you never know when you’ll want to zoom into a portion of a scene to grab a slice of the intimate landscape. It may produce a stronger image. In the first image that appears in this week’s tip, I used an ultra wide to include both the sky and the reflection. The clouds were dramatic and the reflection was like glass. I wanted to include both in the image. The only way possible was to use my widest lens at its widest setting. Conversely, the photo of the hoodoos at Bryce Canyon National Park was made with a telephoto lens zoomed to a long setting. While the overall wide angle scenic showed the entire amphitheater, the more intimate slice shows the erosion and colors of the rocks in a more pronounced way. In other words, be sure to exhaust all possibilities before you leave a location. Use all your lenses in your bag before you move on to the next location. Remember this -

**Research Before You Go:** A common misconception among beginning photographers is once they see an image of a given location, they figure that all they need to do is go there and they’ll get the same shot. What they may not realize is the time of year and time of day have a huge impact on the outcome of the photo. Some subjects are best shot in winter while others are best made in summer. It all depends where in the sky the sun rises and sets. In the winter a location may be gorgeously side lit while in the summer, the light may hit the backside. If it’s a location where flowers bloom, when is the best time to go? If it’s fall color dependent, when is the best time to go?

**Composition - Lines and Balance:** For me, the most important photographic ingredient is the light. Composition comes in a close second. The arrangement of elements within the scene should show balance and simplicity. Use what’s there to enhance the final outcome of the pressed shutter. This may include the use of a leading line of a river or creek. It may mean getting down low to include a foreground cluster of pristine flowers. Regardless of what’s included, a key to arranging these elements is to create balance. Be sure there are important compositional entities at the top, bottom, right and left to achieve balance. Without balance, one part of the photo will be more heavily weighted. In this case, the viewer’s eye will be drawn to that part and the rest will be ignored. The idea is to assemble all parts so no one

**Know Your Gear:** The biggest lens, the latest camera body, the best filters and the snazzy new camera bag are great to own, but unless you know how to work and use them, they won’t net you better images. Be sure to read your camera manual and use your new gear a lot BEFORE you go on a major photo trip. Develop a system where you know where everything goes so you don’t fumble around looking for that filter you need because you’re chasing the light. Know what to do if you have to switch gears because a wild animal just entered the scene and you want to feature it in the photo. Don’t think that just because you bought new gear, you’ll get great shots. I offer you this - if you buy an upscale computer to do word processing,

**The Intimate Landscape:** Many beginner landscape photographers only look forward. After all, the grand scenic unfolds before them so it’s only natural. While this is all well and good, don’t neglect to look to your left, to your right, and especially down at your feet. You’ll miss many a photographic opportunity if you don’t. The intimate landscape is that portion of the whole that often goes unnoticed. It’s the small piece that houses a lot of potential. It could be a small flower growing from a stone, a single autumn colored leaf, a pattern in a rock, or a small cascade in a stream. Learn to see beyond the obvious so you’ll come home with the scenic gems that are not as apparent as the grand scenic.



Russell Burden